

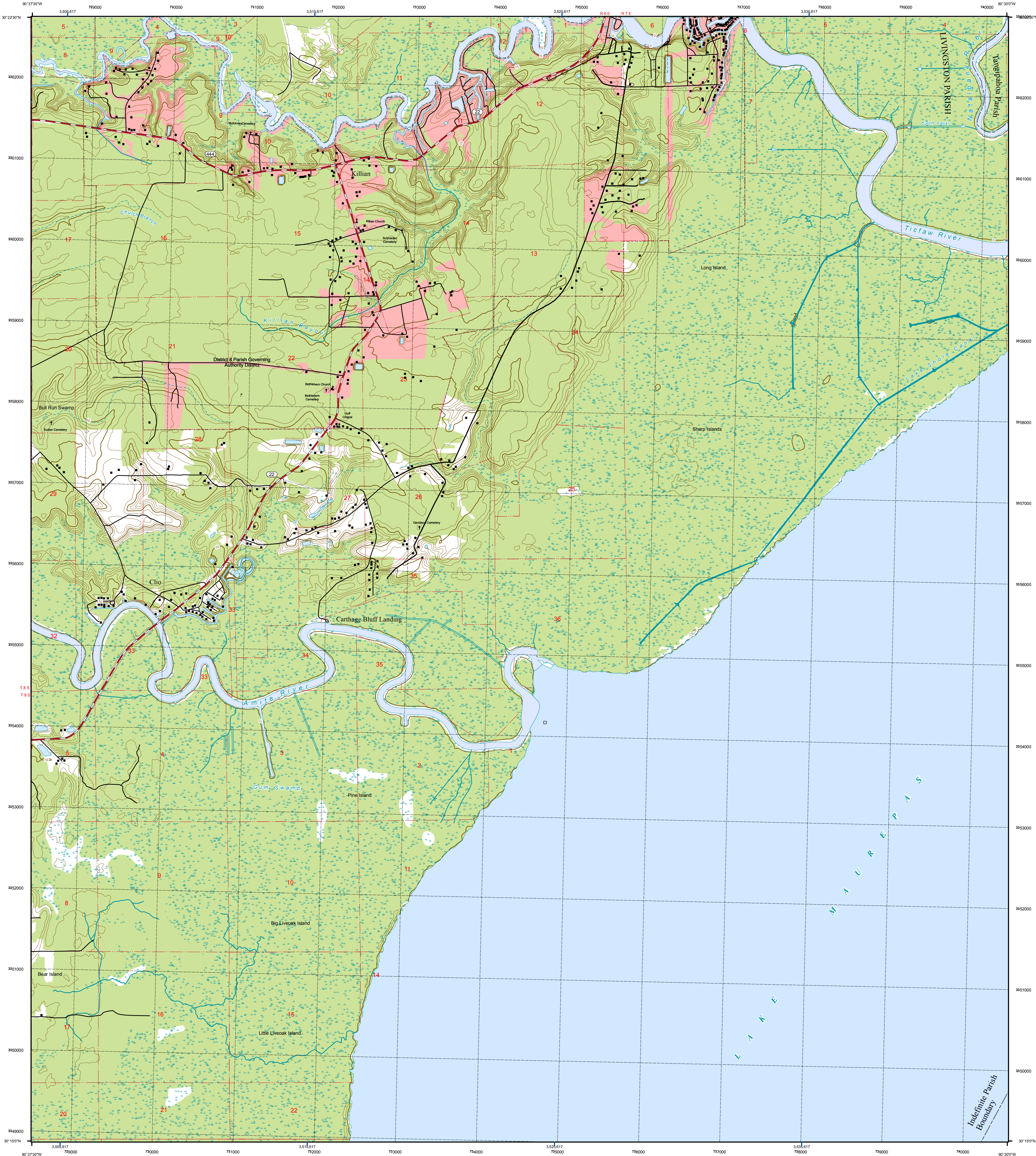


STATE OF LOUISIANA



DEPARTMENT OF TRANSPORTATION AND DEVELOPMENT

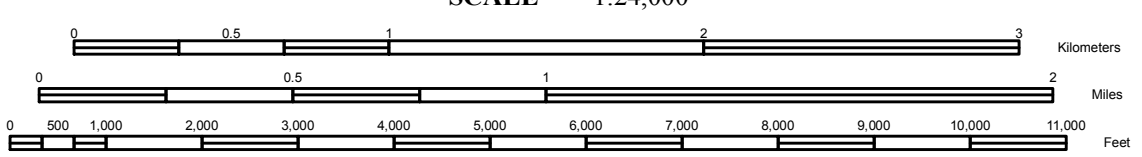
KILLIAN QUADRANGLE  
LOUISIANA  
7.5-MINUTE SERIES (TOPOGRAPHIC)



Produced by Louisiana Department of Transportation and Development

Topography derived from LIDAR .....2004  
Hydrography and vegetation derived from aerial photography .....2005  
Transportation derived from LADOTD database dated .....2007  
Boundaries derived from LADOTD database dated .....2007  
GNIS names provided by USGS and LADOTD  
Public Land Survey System and Survey Control .....2002  
Man-made structures derived from LADOTD and aerial photography .....2005  
Urban and Urbanized Areas are based on US Census 2000 clusters  
and replace historical USGS City and Urban Area delineations  
UTM Grid Declination .....0° 44' East  
Magnetic North Declination .....0° 47' East  
This quadrangle covers a subsidence area

North American Datum of 1983 (NAD 83).  
Projection and 1,000 meter grid Universal Transverse Mercator, zone 15N  
10,000-foot ticks: Louisiana State Plane Coordinate System (south zone)  
Louisiana Official Coordinate System established by the La. R. S. 50:11 statute



CONTOUR INTERVAL 2 FEET  
NATIONAL GEODETTIC VERTICAL DATUM OF 1988  
THIS MAP COMPLIES WITH NATIONAL MAP ACCURACY STANDARDS

FOR SALE BY LOUISIANA DEPARTMENT OF TRANSPORTATION AND DEVELOPMENT  
P.O. Box 94245, Baton Rouge, LA 70804-9245 or 1201 Capitol Access Road, Baton Rouge, LA 70802

Flood	Springhead	Proctorville
Whitwell	Waller	Marshall
Waller	Any Way	Rutledge



ROAD CLASSIFICATION

- Interstate
- U.S. and State Highway
- Major Local Road
- Minor Local Road
- Private Road or Vehicle Trail
- Access Ramp
- Interstate Route
- U.S. Route
- U.S. and State Highway

KILLIAN, LA

N 30.250 W -90.500

PHOTO REVISÉ 2008  
DMA 7844 III NE-SERIES V865

This quadrangle is located  
in the following parishes:  
Livingston